



X10CC





ZODIAC



AZ 79859D

ZODIAC

MERCURY

MERCURY



ACW19590

GARMIN



4 TARGETS:



1. Be the first brand who mix RIB & CC boat to tick all boxes
2. Develop a premium range and model adapt to our premium customers
3. Be positionned on the "big size" market
4. Take market share on the US maket (only 1% is RIB)

RANGE POSITIONING

NEW ARCHITECTURE / NEW MARKET / NEW VISION

X10CC

OUR VISION : Combine RIB benefits within The CC category

RIB :

1. Tubes protecting the hull when docking
2. Profile providing a smooth ride
3. Tubes making it unsinkable
4. Number of people onboard

X

CC :

1. Space of the walk around – storage, comfort and feeling safe
2. Acknowledge as "The real boat" in US (and countries where it's difficult to sell ribs)
3. Hard sides enabling add-ons – cup holders, rod holders

TARGET (CUSTOMER)



European



- CEO or liberal
- 55 years old
- Family man
- Navigate with friends and family
- Priority: Power
- Spend several days on the boat



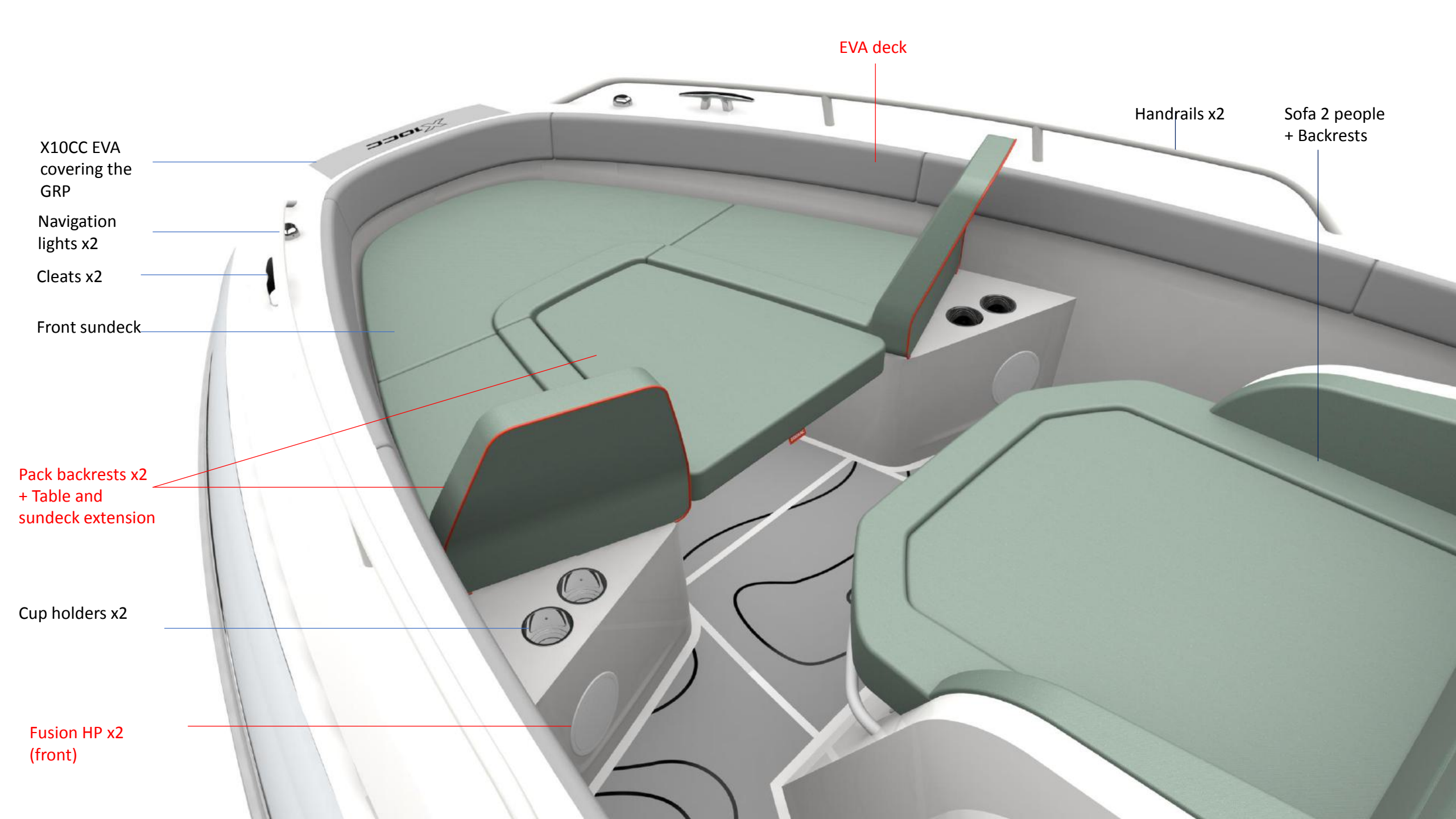
US



- Family man
- 50 years old
- Navigate alone
- Passionated by fishing
- Priority: Power and multi-use
- Practice only the day boat

THE OFFER IN DETAILS...





EVA deck

Handrails x2

Sofa 2 people
+ Backrests

X10CC EVA
covering the
GRP

Navigation
lights x2

Cleats x2

Front sundeck

Pack backrests x2
+ Table and
sundeck extension

Cup holders x2

Fusion HP x2
(front)



Fusion HP x2 T-TOP

T-TOP Storage

Wiper

Glass windshield

Panel space x2 screens -
Garmin 12' x2

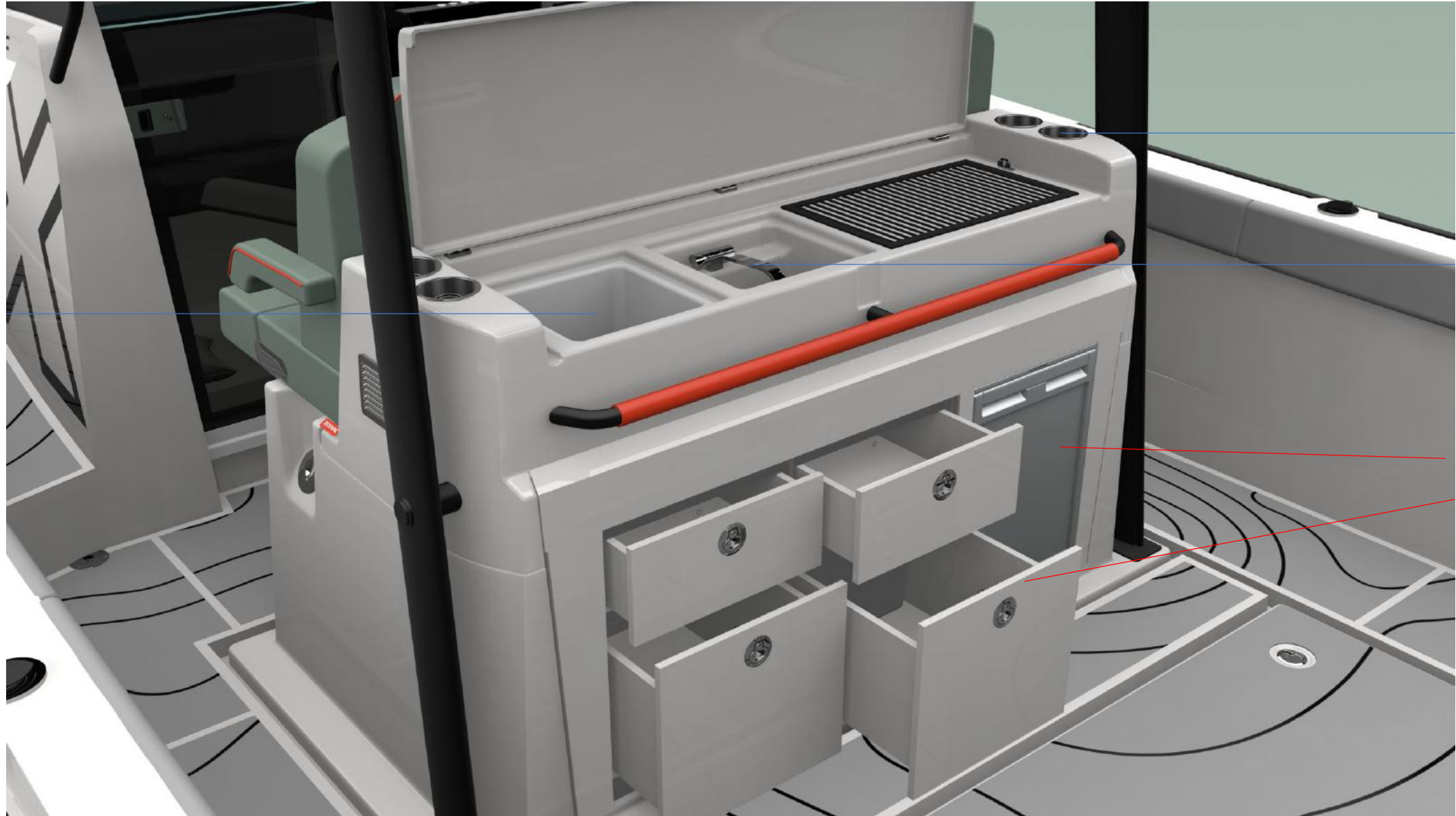
Joystick

Bow thruster

Tilting wheel

Engine screen

Sliding door



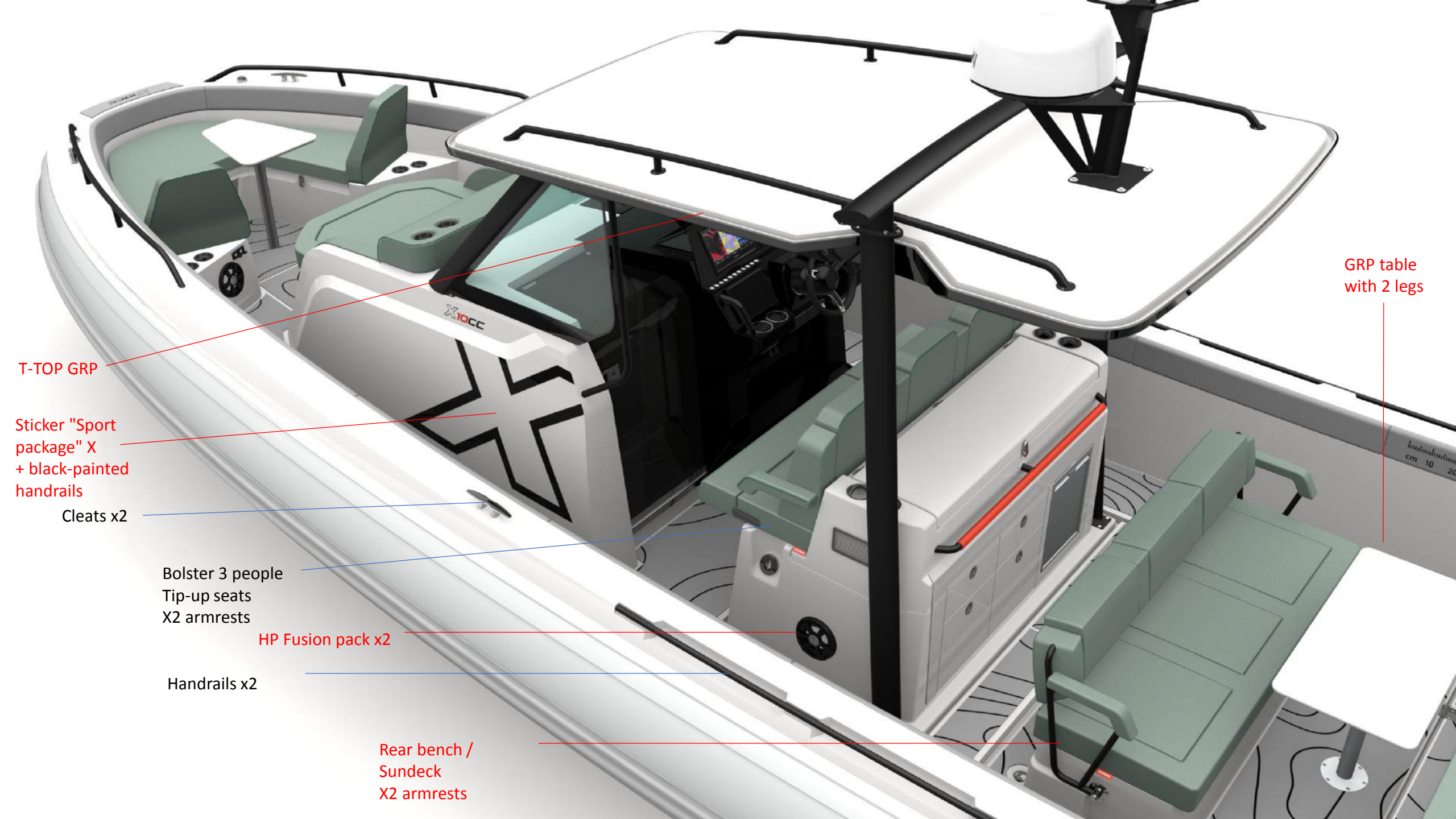
Cup-holders x 4

Sink

Fridge 51L

Kitchen package, 4 drawers

Ice box / storage



T-TOP GRP

Sticker "Sport package" X + black-painted handrails

Cleats x2

Bolster 3 people
Tip-up seats
X2 armrests

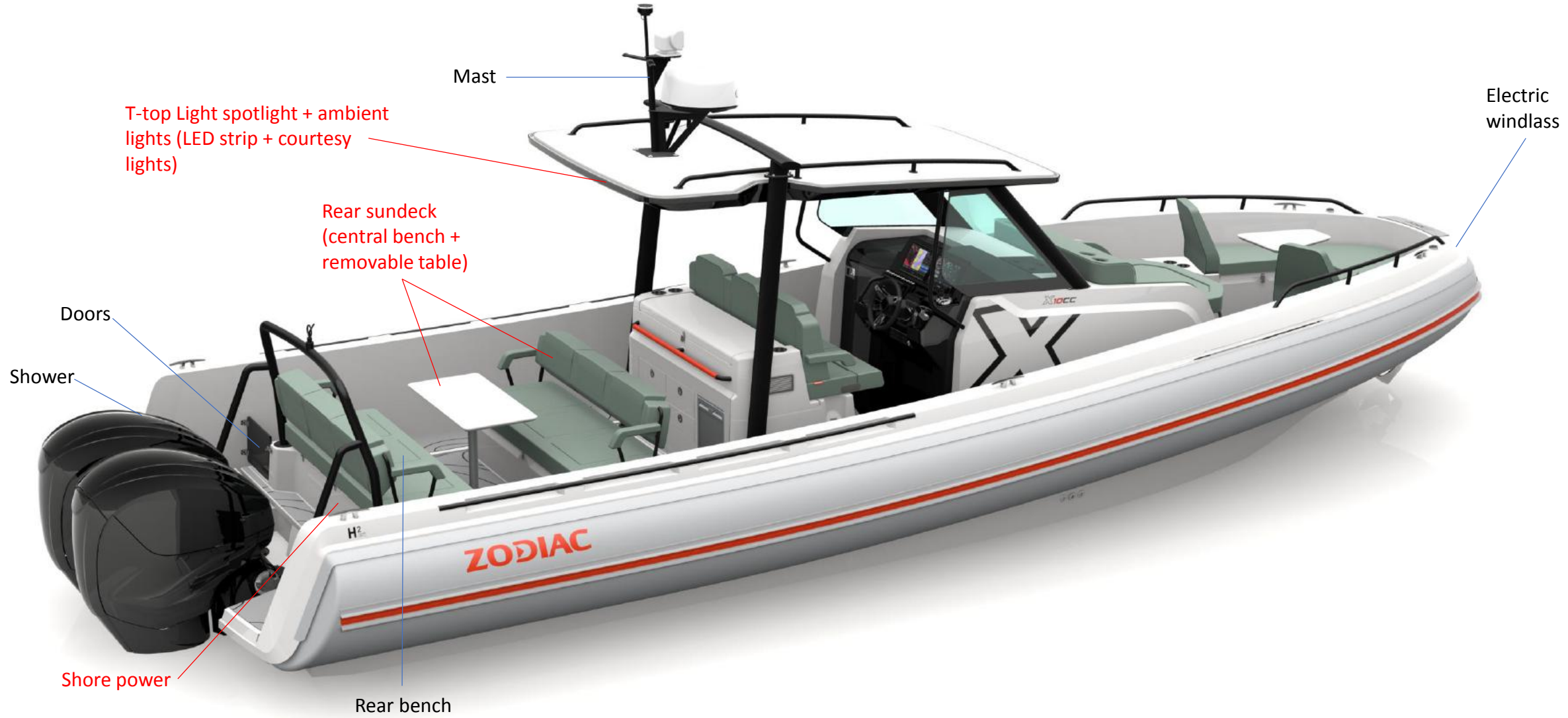
HP Fusion pack x2

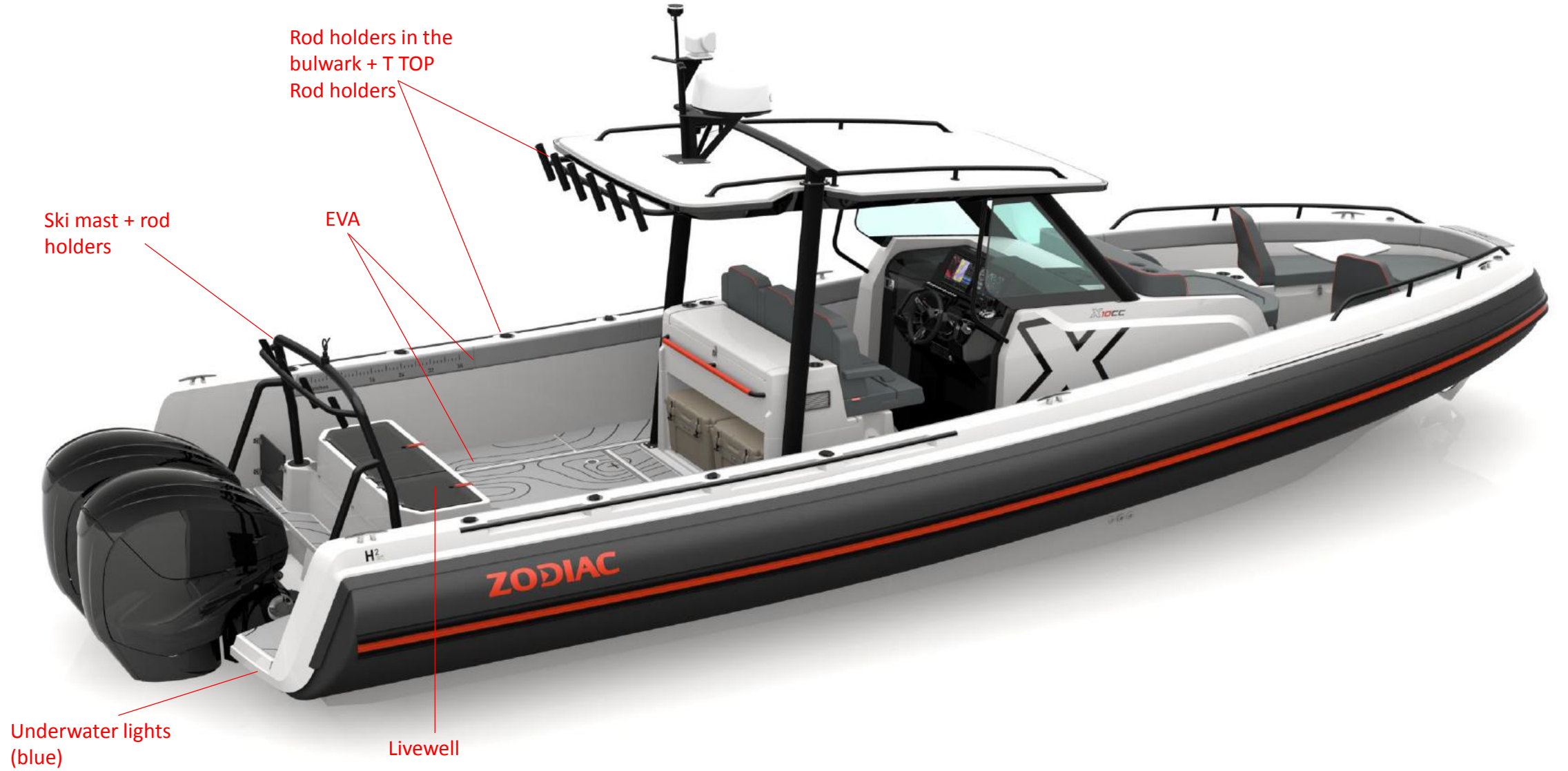
Handrails x2

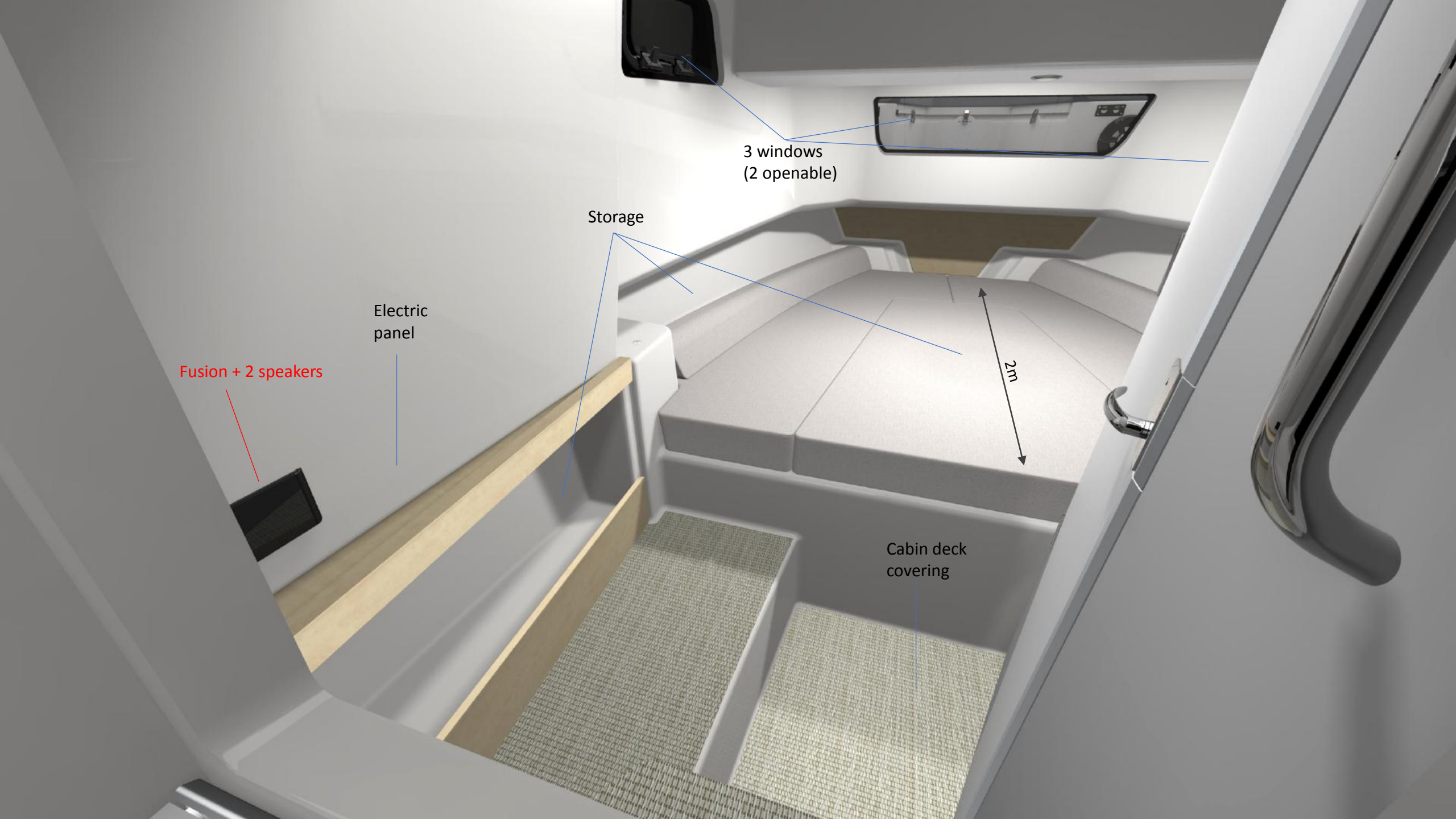
Rear bench /
Sundeck
X2 armrests

GRP table
with 2 legs

Handrails
cm 10 20







3 windows
(2 openable)


Storage

Electric
panel

Fusion + 2 speakers

2m

Cabin deck
covering

A 3D rendering of an RV interior. The scene shows a large, light-colored fabric mattress on the floor. To the right, there is a white sink with a chrome faucet and a white toilet. A yellow door is open, revealing a wooden table and a window. On the left wall, there is a black rectangular vent. A blue line points from the text '3 windows (2 openable)' to the vent. A red line points from the text 'cabin light atmosphere, (LED strip lights + book light)' to the wall above the sink. A blue line points from the text 'Mattress' to the mattress.

3 windows
(2 openable)

cabin light atmosphere,
(LED strip lights + book light)

Mattress

Mirror

Sink

Storage

Gauge

Toilet



RECAP OFFER....

STANDARD

FRONT:

- Bow roller + Zodiac logo
- Electric windlass
- Navigation lights x2
- Cleats x2
- Front sundeck
- Cup holders x2
- Handrails x2
- Sofa 2 people + Backrests

BOLSTER / CONSOLE / KITCHEN:

- Wiper
- Glass windshield
- Ice box / storage
- Cup-holders x 4
- Sink
- Cleats x2
- Bolster 3 people
- Tip-up seats
- X2 armrests
- Handrails x2

INCOMPATIBILITIES:

- Livewell with rear sundeck

CABIN:

- Sliding door
- Electric panel
- 3 windows (2 openable)
- Matress
- Storages
- Cabin deck covering
- Sink
- Gauge
- Toilet
- Mirror
- Spots

AFT:

- Doors
- Shower
- Rear bench

OPTIONS

T TOP

Bimini (rear and bow)

Black handrail + "X" stickers : WIP

Kitchen drawers + fridge (51L)

Fridge only (51L)

Bow sundeck (backrest + table + sundeck cushion)

Rear sundeck and removable table legs (central bench + table)

Rod holders in the bulwark + T TOP Rod holders

Livewell

Ski Mast with rod holders

Pré-rig

Underwater light (x2 rear)

Deck and cockpit lights, cabin atmosphere, (LED strip lights + courtesy lights + book light)

T-top Light spotlight + ambient lights (LED strip + courtesy lights)

Bow cover + Wet bar / leaning post cover + Console panel & door cover + Sofa cover + Rear bench cover/livewell

Central bench cover

Bow thruster

Shore power

Fusion pack (6HP + sub, open version only)

Fusion pack (8HP + sub)

Deck covering (EVA)

COLORS & TRIMS...



TUBE



3 colors:

- White carbone
- Military grey carbone with orange logo and orange stripe
- Black carbone

New on tubes:

- EPDM black stripe and not PVC !!!
- finishing strip between tube and hull



GEL COAT

1 Color:

- White (no choice)

HANDRAILS

2 colors of painting;

- Black (option)
- White (standard)



3 UPHOLSTERIES

3 colors:

- Grey : SHADOW
- Beige and white : TAN
- Green : HUNTER

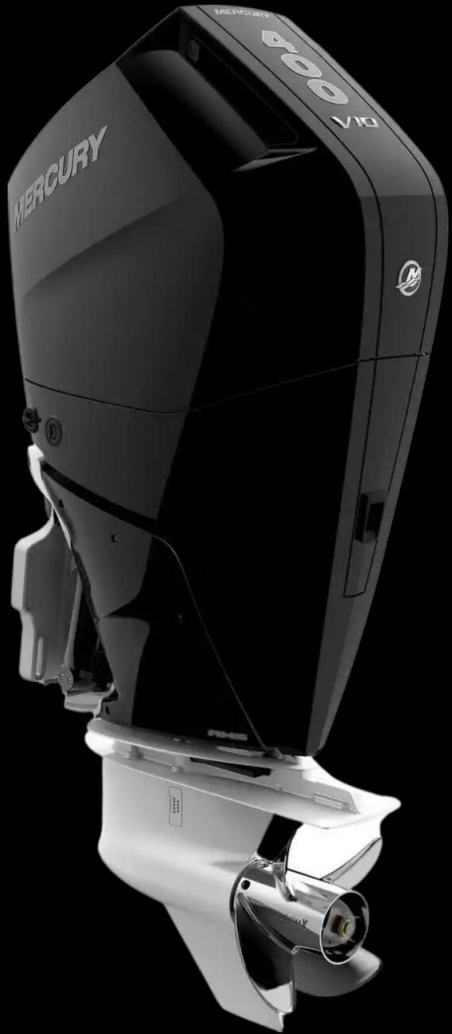


SPECS



- Weight: 3.5T (empty & without accs)
- Length: 9.99 M
- Width (int): 2.6 m
- Width (ext): 3.46m / 3.8m (tube)
- Category : B-9 / C-20

ENGINE SPECS



Min: 2 x 225 HP

Max: 2 x 450 HP

10 first units available ONLY as boat turn key with :
2x Mercury 300 HP + pre rig + joystick
or 2x Mercury 400 HP + pre rig + joystick

FIRST PICTURES...



FIRST PICTURES....

WHITE VERSION



FIRST PICTURES....

BLACK VERSION





TABLE VERSION



STORAGE UNDER
THE BENCH

SUNDECK EXTENSION VERSION





FRONT SOFA

BOLSTER



LEANING POST



TOILET + BATHROOM



BED



CABIN



CABIN – STORAGE UNDER THE BED



ELECTRIC PANEL

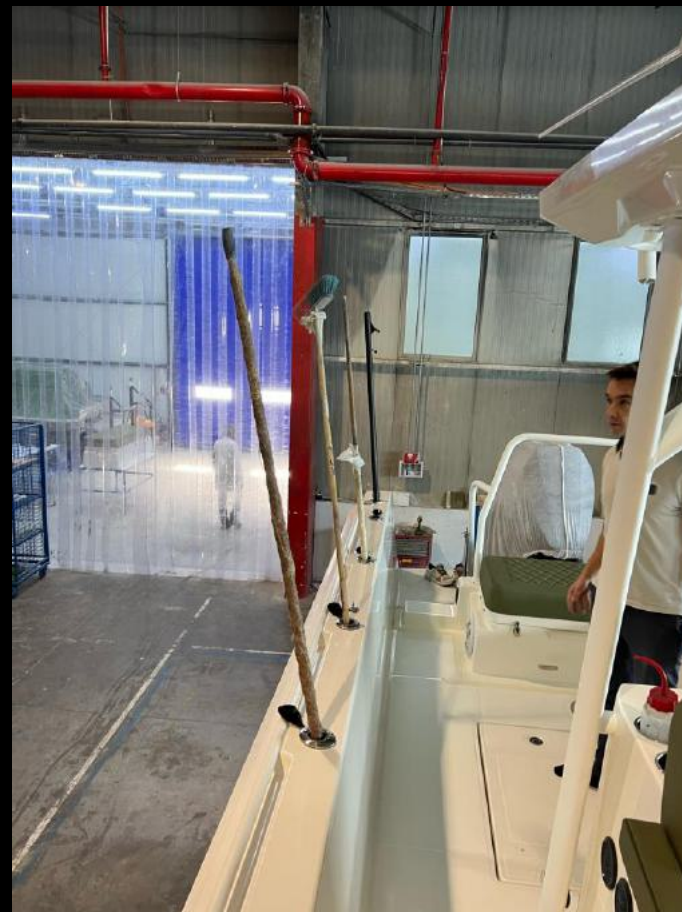
AFT – Storage under the deck – Fridge - Kitchen - Drawers



AFT SEAT + STORAGE + AFT TABLE



ROD HOLDERS ALL ALONG THE GRP



PRICES



X10CC RETAIL PUBLIC PRICES

X10CC Starting price – STANDARD BOAT ONLY (without options, without engines)

- Public Price ex VAT = 139 000 €*

X10CC Starting price – STANDARD BOAT Turn key (without options, with 2x 300HP Mercury engines)

- Public Price ex VAT = 218 188 €*

X10CC BOAT Turn key - WELL equipped – 2x 300HP Mercury

- Public Price ex VAT = 267 163 €*

X10CC BOAT Turn key – FULL OPTIONS – 2x300HP Mercury

- Public Price ex VAT = 292 349 €*



OPTIONS :

- T TOP/Bimini
- Fridge 51L
- Rear bench + table
- Bow table sundeck
- Ski mast
- GPS Garmin x2
- Shore power
- Deck and cockpit lights, cabin atmosphere
- T-top Light spotlight + ambient lights

X10CC OPTIONS



| OPTIONS | Public price ex VAT |
|--|---------------------|
| Kitchen pack (drawers + fridge) | 7 225 |
| Fridge only | 2 000 |
| Rear sundeck and telescopic table legs (central bench + table) | 7 827 |
| Livewell | 3 400 |
| Underwater light (x2 rear) | 1 546 |
| Shore Power EMEA | 2 998 |
| Ski Mast with rod holders | 2 404 |
| Rod holders in the bulwark + T TOP Rod holders | 1 100 |
| T-Top | 18 633 |
| Bimini x2 | 2 400 |
| 2 x GPS Garmin GPSMAP 12x3xsv + 1 transducer | 6 977 |
| Grey EVA (deck and comming bolster) | 4 184 |
| Bow sundeck (backrest + table + sundeck cushion) | 2 214 |
| Bow thruster | 5 931 |
| Deck and cockpit lights, cabin atmosphere, (LED strip lights + courtesy lights + book light) | 1 761 |
| T-top Light spotlight + ambient lights (LED strip + courtesy lights) | 1 761 |
| Fusion pack (6HP + sub, only for open version) | 6 741 |
| Fusion pack (8HP + sub) | 7 200 |

X10CC DEALER PRICE

DEALER A

| X10CC | TURN KEY BOAT with 2x300 HP Mercury (V8) | TURN KEY BOAT with 2x400 HP Mercury (V10) |
|-------------------------------|---|--|
| Boat | 20% | 20% |
| Accessories | 20% | 20% |
| Engines + pre rigg + Joystick | NET PRICE = 60 730€ | NET PRICE = 72 034€ |
| DEPOSIT TO ORDER | 10% | 10% |

Order before End of June (for delivery in 2024) => BOAT 25% / ACCESSORIES 25%

X10CC DEALER PRICES

X10CC Starting price – STANDARD BOAT ONLY (without options, without engines)

- 111 200 € ex VAT*

X10CC Starting price – STANDARD BOAT Turn key (without options, with 2x 300HP Mercury engines)

- 171 930 € ex VAT*

X10CC BOAT Turn key - WELL equipped – 2x 300HP Mercury

- 211 110 € ex VAT*

X10CC BOAT Turn key – FULL OPTIONS – 2x300HP Mercury

- 231 259 € ex VAT*



OPTIONS :

- T TOP/Bimini
- Fridge 51L
- Rear bench + table
- Bow table sundeck
- Ski mast
- GPS Garmin x2
- Shore power
- Deck and cockpit lights, cabin atmosphere
- T-top Light spotlight + ambient lights

Ready to order yours ?

